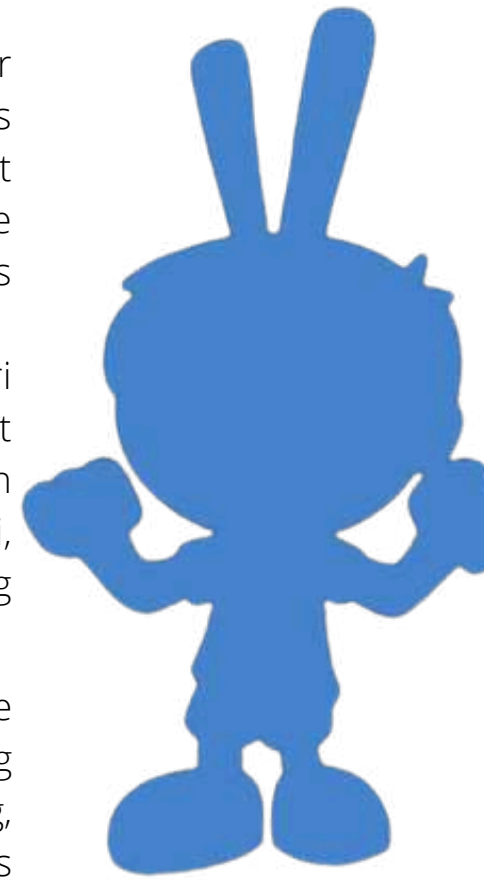


# CLOVERLEA SCHOOL

# LOCALISED CURRICULUM ANZH



At Cloverlea School, our localised curriculum is developed with the support and knowledge of Rangitāne and the guiding principles outlined in Niho Taniwha. We integrate pūrākau (Māori narratives) to connect LEGENDs with the rich cultural heritage our local iwi, fostering a sense of belonging and identity.

Drawing on the idea that what is best for Māori is best for all, our curriculum emphasises inclusive practices that uplift every LEGEND while honoring te ao Māori (the Māori worldview). By weaving Rangitāne narratives, tikanga (customs), and mātauranga Māori (Māori knowledge) into our teaching, we create meaningful learning experiences that nurture cultural competence, ensuring our LEGENDs learn through a Te Tiriti lens.

### IT IS IMPORTANT BECAUSE:

A localised curriculum is essential for our kura as it fosters a deeper connection between our LEGENDs and their immediate environment, culture, and our community. By integrating the values, knowledge, and traditions of Rangitāne, our local iwi, we honor their role as kaitiaki (guardians) of this land and provide LEGENDs with an authentic sense of belonging and identity. Rangitāne's perspective enriches our curriculum by emphasising the importance of te reo Māori, mātauranga Māori (Māori knowledge), and the significance of local history, stories, and tikanga (customs). This partnership ensures that learning is relevant and meaningful, equipping our students with a strong cultural foundation and a sense of pride in their heritage, while also preparing them to contribute positively within the community, regardless of their ethnicity.

### CURRICULUM LINKS:

The Aotearoa New Zealand Histories curriculum is seamlessly woven into our localised curriculum, ensuring that LEGENDs explore national pūrākau through the lens of our local context. This integrated approach allows LEGENDs to understand how significant events and pūrākau from across the nation resonate within our own community, particularly through the history, values, and experiences of Rangitāne. By grounding these historical learnings in our local setting, LEGENDs gain a more personal and tangible connection to the past, recognising that the broader history of Aotearoa is deeply intertwined with the land and people they interact with daily. This cohesion ensures that these curriculums complement rather than stand apart, enriching our LEGENDs' understanding of both local and national heritage. Our localised curriculum is interwoven throughout the whole curriculum and LEGENDs will experience pūrākau through all curriculum areas. It is important that it is not confined to one area of learning or one term, but is taught across all learning contexts.

### WHANAUNGATANGA

By using pūrākau, our LEGENDs will also make strong connections with the aspirations of local iwi and with each other. By learning through different learning areas, our LEGENDs will build stronger connects with each other and with the whenua we stand on.

### LINKS TO OUR LEGEND VALUES:

- L**ead - making the right choices at the right time and understand that their decisions impact others, including the land, the language and the future.
- E**xcellence - doing the best they can to understand how their actions can make a long term impact.
- o**rganised - Being ready for learning and organising their cultural learning to support social actions.
- r**esilience - showing resilience when recognising inequities in society.
- i**nclusive - learning strategies to ensure Te Tiriti is included in all areas of our kura, but also include and respect social diversity.
- D**etermined- Determined to make a difference so our kura can see, hear and feel tikanga.

### ENACTING TE TIRITI O WAITANGI:

By integrating te ao Māori (the Māori worldview) and tikanga Māori into the curriculum, we ensure that both Māori and non-Māori students understand and respect the cultural significance of Te Tiriti. This approach actively upholds the concept of partnership, working alongside local iwi, Rangitāne, to shape the curriculum in a way that honours Māori perspectives. It also prioritizes the protection of Māori language, culture, and identity, ensuring these are valued within the school environment. Through a bicultural lens, the curriculum fosters inclusion, equity, and participation, encouraging all learners to engage with and appreciate the rich cultural heritage of Aotearoa.



### RESEARCH & EVIDENCE:

Niho Taniwha - using the three year journey of Niho Taniwha as a reflective practise tool in all that we do within our kura.

**Ārahi, Kairangi, Nahanaha, Manawaroa, Kotahitanga, Rae Pakari**

**LEAD, EXCELLENCE, ORGANISED, RESILIENCE, INCLUSIVE, DETERMINED**